

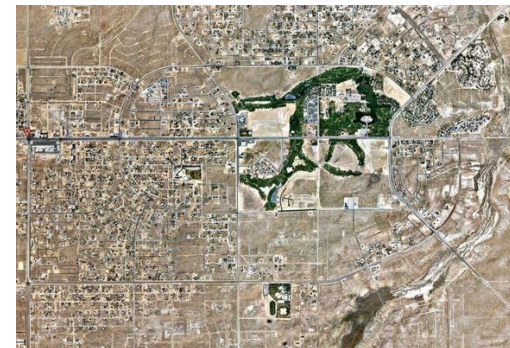
California City
A Ghost City
in the Mojave Desert

'A **masterplan city** seating in the middle of the **Mohave Desert**' – yet, the **third largest city in California** totals less than **20,000 inhabitants**, leaving huge plots of land still unbuilt.

What happened?

In **1958** a real estate developer and sociology professor, **Nat Mendelsohn** bought over 300 km² of Mojave Desert land with a view to master-planning California's next great city. He hoped his model city would one day rival Los Angeles in size, around a Central Park with a huge artificial lake.

However, his project hasn't panned out the way he hoped. To this day, a **vast grid of dirt roads** still extends beyond the developed area of the city, fostering the impression of a North-American version of the **Nazca Lines**.



Click on the pictures for a
DOCUMENTARY
on this ghost city